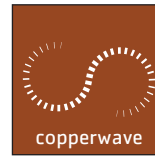
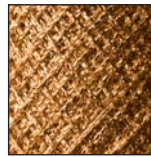


COPPER



600 MHz cat. 7

SSTP 7



According to

DX66**-*

- > IEC 61156
- > EN 50288-4
- > IEC 11801 2nd Ed.
- > EN 50173 2nd Ed.

1st ISSUE 2006

ARCHITECTS OF LIGHT



CONSTRUCTION (NOMINAL VALUES)

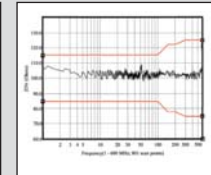
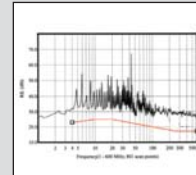
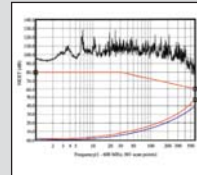
cat. 7

| | | | | |
|--------------------------|------------------------|----------|-----------|----------|
| Conductor | annealed copper wire | | AWG | 23 |
| Insulation | foam skin polyethylene | diameter | mm | 1,42 |
| Individual screen | longitud AL/PET tape | | | |
| Braid screen | tinned copper braid | | | |
| | drain wire | diameter | mm | 0,5 |
| Outer sheath | PVC or Afumex® | single | diameter | mm |
| | | siamese | outer dim | mm |
| | | | | 7,8 |
| | | | | 7,8x15,7 |
| Weight | single | | kg/km | 76 |
| | siamese | | kg/km | 153 |

ELECTRICAL CHARACTERISTICS AT 20 °C (TYPICAL VALUES)

GRAPH

| | | |
|----------------------------------|---|----------------|
| Operating Voltage | ≤ | 125 Vdc |
| DC Loop Resistance | ≤ | 140 Ω/km |
| Capacitance Unbalance | ≤ | 1000 pF/km |
| Input Impedance 1-300 MHz | | 100±10 Ω |
| Input Impedance 3-600 MHz | | 100±20 Ω |
| NVP @ 100 MHz | | 0,73 c nominal |
| Skew @ 100 MHz | ≤ | 20 ns/100 m |
| LCL | ≥ | 40 dB |
| RL headroom | > | 7 dB |
| NEXT headroom | > | 15 dB |
| PS-NEXT headroom | > | 15 dB |
| ACR @ 600 MHz | > | 25 dB |
| PS-ELFEXT headroom | > | 10 dB |



ORDERING CODE

| cable | code | sheath | std colour | length | packaging | marking |
|-----------|----------|--------------|-----------------|--------|-----------|------------------------------------------------------------|
| SSTP 4P | DX6605-5 | Afumex® LSZH | Orange RAL 2004 | m 500 | drum | PRYSMIAN DX6605 - SSTP 4x2x23AWG LSZH - CAT. 7 600 MHz |
| SSTP 4P | DX6605-1 | Afumex® LSZH | Orange RAL 2004 | m 1000 | drum | ISO/IEC 11801 - EN 50173 - SGS CERTIFIED YWWY metric m |
| SSTP 4P | DX6600-5 | PVC | Grey RAL 7001 | m 500 | drum | PRYSMIAN DX6600 - SSTP 4x2x23AWG - CAT. 7 600 MHz ISO/IEC |
| SSTP 4P | DX6600-1 | PVC | Grey RAL 7001 | m 1000 | drum | 11801 - EN 50173 - SGS CERTIFIED YWWY metric m |
| SSTP 2x4P | DX6625-5 | Afumex® LSZH | Orange RAL 2004 | m 500 | drum | PRYSMIAN DX6625 - SSTP 2x(4x2x23AWG) LSZH - CAT. 7 600 MHz |
| SSTP 2x4P | DX6625-1 | Afumex® LSZH | Orange RAL 2004 | m 1000 | drum | ISO/IEC 11801 - EN 50173 - SGS CERTIFIED YWWY metric m |
| SSTP 2x4P | DX6620-5 | PVC | Grey RAL 7001 | m 500 | drum | PRYSMIAN DX6620 - SSTP 2x(4x2x23AWG) - CAT. 7 600 MHz |
| SSTP 2x4P | DX6620-1 | PVC | Grey RAL 7001 | m 1000 | drum | ISO/IEC 11801 - EN 50173 - SGS CERTIFIED YWWY metric m |

About Us

Prysmian is a global market leader in optical cables, supplying a major part of the world's optical cable needs. With a strong heritage of highly advanced R&D, Prysmian is at the leading edge of the technology.

With a worldwide manufacturing presence in 12 countries and in 4 continents Prysmian's global experience and local manufacturing capacity is a significant force in the international marketplace, assuring continuity of supply and high level of service.

Prysmian's optical technology encompasses optical fibers, cables, connectivity, projects and services ensuring that not only the right cable but the right total optical communication system is matched to our customers' needs.

Prysmian offers a complete service from design planning, manufacture and installation through to technical support of commissioned cable networks. Planning and surveying are the cornerstone of our operation, with quality maintained through the expertise and dedication of all our staff working across the business to ISO 9001 and 14000 standards.

When a project is in Prysmian's hands, our customers can depend on a total quality service.

Specifications are subject to change without notice. Cable are designed and tested according to the main national and international specifications (IEC specifications).

dega design group